

August/September 2025

# Wednesfield Magazine

**FREE**

Please take  
a copy home!

Written in Wednesfield, serving the people and businesses of Wednesfield and surrounding areas

Your property could be  
worth more than you think.  
Get a **Free Valuation** now!

Your local, family run estate agents work tirelessly  
to secure the best price, handling everything from  
marketing to viewings.



"We have just completed our purchase of  
our house with Belvoir. They kept in touch  
throughout the whole process and were  
**very professional** and **friendly** throughout  
our purchase. **Would highly recommend.**  
Keep up the good work!"

M.P, 5\* Google Review July 25

## Selling?

We offer no sale, no fee,  
and no contract tie-in.

## Letting?

Get ready for the  
Renters Rights Bill.



Scan the code or visit  
**belvoir.co.uk/valuation**  
Call: **01902 932 244**



## BELVOIR!



Why not come in and see us?  
2 Lichfield Rd, Wednesfield, Wolverhampton WV11 1TF

**Keep this magazine until the October/November issue arrives!**

Find us on 

Online version available at **www.westmidlandsmagazines.com**

# Sian Computers

## ONSITE REPAIRS

*We Repair*

- Mobile Phones
- Tablets
- Laptops
- Computers
- Gaming Consoles



*We also offer*

**Printing  
Photocopying  
Scanning**

*We sell*

- Laptops • Tablets
- Mobile Phones
- IT Accessories
- CCTV Security Equipment + Installation

**SAMSUNG GALAXY BOOK  
GO1414 MEMORY 4GB  
STORAGE 128GB  
SCREEN 14 INCH  
FEATURES WINDOWS 11  
SIM CARD SLOT  
SPECIAL OFFER £399**



*New Opening Times*

**Monday - Friday: 10am till 4pm**

**Saturdays: 10am till 2pm**



## Sian Computers

16 Collingwood Road, Broadway, Bushbury, Wolverhampton, WV10 8EB

[www.laptoprepairwolverhampton.co.uk](http://www.laptoprepairwolverhampton.co.uk)



@SianComputers

**01902 651698**

**siancomputers1@gmail.com**



Sian Computers

# Cloudy2Clear, A Local Service, Saving You Money.

As a leading domestic glass replacement company for more than 16 years, Cloudy2Clear windows are the leading name in the industry. There is no need for you to risk your windows by using the dreaded double glazing cowboy down the street. You can join over 336,000 happy customers and replace your glass ethically and affordably. If you have a failed glass unit, it may not provide you with the protection you need or be as energy-efficient as it once was. Take a minute to check your home to see if any double glazing has failed? Taking action now can prevent future financial problems.

When talking to the Manager of Cloudy2Clear windows Brian Stanley it became clear that these values have been held dear for a

number of years. Since starting the business some years ago Cloudy2Clear have remained true to their core values of supporting the local community by providing a service that saves the public money.

The Cloudy2Clear service only requires the glass to be replaced and not the whole window once the unit has failed. Brian commented "Cloudy2Clear were able to assist our community through the last financial crisis in 2008 due to the savings that can be made in using our service. Unfortunately we might be going through something similar again soon and the public can rest assured that we will be there to help once again".

**For a free quotation please call 0800 61 21 118 or visit [www.cloudy2clear.co.uk](http://www.cloudy2clear.co.uk).**

“  
*Ask me about our fantastic Energy Saving Glass.*  
”



## Have Your Windows Steamed Up?

**Replace the pane, not the frame!**

All glazing backed by our

**25  
YEAR**

**GUARANTEE**

***"I really liked the fact that they were a local community run business"***

*Janet Beard*



**We are a  
Checkatrade  
Member**



**Get a FREE Quote**

**Social distancing in operation**

**Faulty locks, handles or hinges?**



**Priority freephone**

**0800 61 21 118**

**[www.cloudy2clear.co.uk](http://www.cloudy2clear.co.uk)**

**Love Your Home - Protect Your Windows - Save Money**





# RL ROOFLINE



- ALL WORK GUARANTEED
- FULLY INSURED
- FREE QUOTATIONS & ADVICE
- VISIT OUR WEBSITE AT:  
**www.rlroofline.co.uk**

- NEW ROOFS
- ROOF REPAIRS
- FLAT ROOFS
- DRY RIDERS
- VERGE SYSTEMS
- RUBBER ROOFS
- CHIMNEY REPAIRS
- REPOINTING
- JET WASHING

**GUTTER CLEANING FROM £29**  
**CUSTOMER SATISFACTION - 100% GUARANTEED**

Proud members of  
**Checkatrade.com**  
Where reputation matters

Mobile: **07308 514279**  
FREE Phone: **01902 275554**  
Email: **rlrooflinelandscaping@gmail.com**  
Website: **www.rlroofline.co.uk**



**P30**



**P35**



**P44**

## Wednesfield Magazine

### Contents

6. Editor's Welcome
8. Perry Hall Primary
10. Crossword
12. Diogo Jota
14. Wildlife in Wednesfield
16. Finance Advice
18. Wednesfield FC
20. Wednesfield High Street
22. News in Brief
26. Feel the Beat of the City
30. Veterans in the Community
32. Sureena Brackenridge
35. Wednesfield in Bloom
39. Ray Fellows
42. Walking Woden
44. Wednesfield Scouts
45. Kids Puzzles
46. Useful Telephone Numbers
47. Crossword Answers



## **UK RUBBER ROOFING ARE MAJOR EPDM FLAT ROOFING MATERIALS SUPPLIERS TO TRADE AND DIY**

We have in stock a minimum of **15 DIFFERENT ROLL WIDTHS OF EPDM** at very competitive prices. Available for immediate collection or delivery.

We stock a wide range of timber including **3" X 4" WALL PLATES, OSB BOARDS, PLYWOOD AND LOFT BOARDS, TREATED TILE BATTENS AND FIRRING STRIPS.**

**TORCH ON FELT** is also in stock along with **DRY RIDGE, DRY VERGE AND ROLLS OF LEAD.** We now have stocks of **RAILWAY SLEEPERS** and **TIMBER DECKING** at very competitive prices. A full range of heavy duty screws up to 300mm long.

We stock a comprehensive range of **ROOF EDGE TRIMS IN UPVC AND METAL** IN A VARIETY OF SIZES AND SHAPES.

**UPVC FASCIA, SOFFITS AND RAINWATER GOODS AND DRY RIDGE AND DRY VERGE SYSTEMS.**

**TORCH-ON MINERAL ROOFING FELT AND UNDERLAY** is also available in a number of colours.

If you require any information or advice on your DIY roof installation or if you require any technical advice, please call us.

# **01902 602808 - 07816 349231**

e: [info@ukrubberroofing.co.uk](mailto:info@ukrubberroofing.co.uk) w: [www.ukrubberroofing.co.uk](http://www.ukrubberroofing.co.uk)

**Opening times - Monday to Friday 8am to 4pm Saturday & Sunday - Closed**



## Wednesfield Magazine

### PART OF WEST MIDLANDS MAGAZINES LTD

Company No. 10452329  
Registered office:  
39 High Street  
Wednesfield  
Wolverhampton  
WV11 1ST

### PUBLISHER/EDITOR

Simon Archer  
Tel. 07534 603662

### EMAIL

simon@westmidlandsmagazines.com

### LETTERS/NOSTALGIA

Send to:  
Wolverhampton City Life  
16 Holberg Grove  
Wolverhampton  
WV11 3LE

### MAGAZINE DESIGN BY

Ed Wilde  
Studio 28  
studio@s28.co.uk

### PRINTED BY

Buxton Press Limited  
Palace Road  
Buxton  
Derbyshire  
SK17 6AE

The Publisher cannot accept loss, damage or omission caused by error in the printing of the advert or editorial. Adverts are accepted in the understanding that descriptions of goods and services are fair and accurate. Wolverhampton City Life does not endorse any advertising material included in the publication. No part of this publication may be reproduced, stored in any retrieval system or transmitted in any form without prior consent of the publisher.

## Dear Reader,

### Welcome to the Aug/Sept issue of the Wednesfield Magazine.

I've just completed a challenge for Pancreatic Cancer UK, which was to walk 60 miles in June – or to do two miles a day.

Two miles doesn't sound a lot, but when you sit down most of the day (yes, I know, it's alright for some!) it's not as easy as it sounds.

I didn't want to just accumulate a number of steps, so I actually did a two mile walk every day – even while on holiday in Croatia. How's that for commitment?

It's amazing how good you feel afterwards, even on the odd day when it rained, there was a feeling of achievement. Not just the walking and getting fit, but knowing you've raised a few quid for a good cause.

Pancreatic Cancer is one of the worst types you can get as there are virtually no symptoms until it's too late.

I know a couple of people who have fallen victim to it, so the thought of them got me off my backside every day and I'll do it again next year. Maybe some of you could join me.

There are a few events coming up in the next few weeks and as someone who helps to organise one of them, I know how much hard work goes on in the background, so please, if you are able, please support them and help to keep them going.

Like most people, I was shocked and saddened by the tragic death of the ex-Wolves player Diogo (not Diego!) Jota.

I never met the guy, but his age, the fact that he had only got married to his childhood sweetheart two weeks before the accident and to leave three young children without a father is just heartbreaking.

My father lost his dad in a farming accident when he was just 8 years old. He also had four younger siblings. There was no Universal Credit, oh and there was a war on. I can't imagine how they managed, but they did and Diogo's family will get through this as they have to, as we all have to in tough times.

Due to the increasing cost of print, more than ever, our advertisers are vitally important to the to the continuation of this magazine. Please have a look at their adverts and if you do purchase anything from them, **PLEASE TELL THEM YOU SAW THE ADVERT IN THE WEDNESFELD MAGAZINE!**

The next issue will cover October and November and will be out on 25th September so if you want to be in it, please contact me by 1st September.

Enjoy your read!

*Simon*





# Heartfelt Care

Every Step of the Way



We offer high-quality residential, dementia and respite care in a welcoming and engaging environment. Arrange a visit to discover comfort, companionship, and expert care.

Learn more about our heartfelt care:

**Bridge Manor Care Home:** 01902 974825

**Newcross Care Home:** 01902 974824

Or visit our website: [averyhealthcare.co.uk](http://averyhealthcare.co.uk)





# Wednesfield Primary School's Pupil Numbers Increased



Sixty new places are to be created at a primary school under a £1m programme that will see new traditional classrooms built and existing provision refurbished.

The places at Perry Hall Primary School in Wednesfield, Wolverhampton, will be spread across two new 30-pupil classes, one in Year 3 and one in Year 5, with effect from September 2025 and have been created to address what the city council calls "significant" demand. Wednesfield is one of the city's four "school planning areas" - the locations used to manage school capacity.

The council said the number of pupils in each primary year group, when expressed as a total across the city, had historically grown by about 300 from the start of their primary education to the end.

The city's Year 5 cohort had already grown by nearly 340 pupils according to the same data.

The current Year 2 cohort had grown by nearly nine classes in three years and the city's Year 1 cohort had already increased by nearly six class sizes in two years.

Key Stage Two classes – Years 3, 4, 5 and 6 – had increased beyond the historical average, with the latter three year groups all rising by more than 11 full classes.

A council report said: *"In recent years, there has been a significant increase in demand for in-year primary school places, and this is not abating."*

*"This is due to a combination of factors including migration, regeneration and housing, and the popularity and Ofsted ratings of Wolverhampton schools."*

*"To meet this demand, additional places are required throughout the city."*

The council said Perry Hall Primary School had shown it continued to provide an education that *"reflected the evolving and increasingly complex needs of the pupils"* and planned to refurbish and build 'traditional' classrooms rather than install *"modular"* temporary buildings.

*"In recent years, several small group rooms have been established adjacent to Key Stage One and Two classrooms, to allow pupils to work with teachers in smaller numbers outside of the traditional class bases,"* it said.

*"This has allowed the school to support children with progress, who may be disadvantaged or vulnerable."*



Head Teacher: Lee Fellows.



# STUDIOS TO RENT



TheStudios, 24 Birch Street,  
Wolverhampton, WV1 4JA



01902 290 969



lettings@thestudios.com

PRICES STARTING FROM

**£760.72 PER MONTH**

inclusive of council tax, utility bills  
and WIFI

## KEY FEATURES:



- Fully furnished studio with private ensuite and kitchenette



- Access to a communal kitchen



- Council tax, utility bills and Wi-Fi included in monthly rent



- Bi-weekly housekeeping services included



- Access to residents only onsite facilities including lounge, bar, cinema room and gym

# M and S Construction Ltd

## Driveways and patios



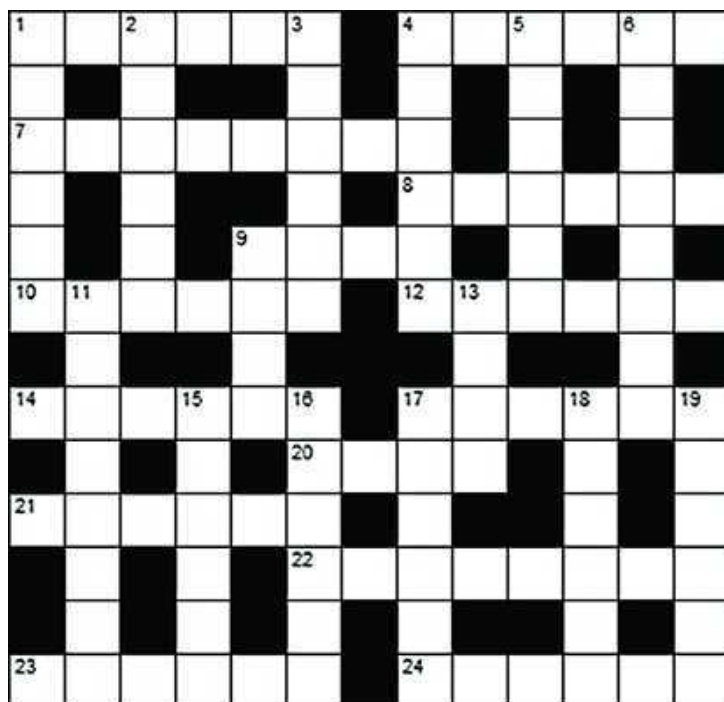
Block paving | Slabbing | Turfing | Resin Driveways | Concrete imprint  
Fencing | Artificial grass | Brickwork | Tarmacing | Graveling

BUILT TO **LAST**. DESIGNED TO **IMPRESS**.

Call Matt **07960 766729** | **07718 222216**

# Crossword

Please see answers  
on page 47



### Across

- 1 Prejudiced (6)
- 4 Whiten, decolour (6)
- 7 Maritime, used on the ocean (8)
- 8 Rhododendron-like shrub (6)
- 9 Particle (4)
- 10 Shortcrust, flaky or puff \_\_\_\_\_ (6)
- 12 Every twelve months (6)
- 14 Socially awkward (6)
- 17 Daredevil (6)
- 20 Ruffian, thug (4)
- 21 Ceramic artist (6)
- 22 Items of jewellery (8)
- 23 People who look after others (6)
- 24 Abrupt (6)

### Down

- 1 Church official (6)
- 2 Warning devices (6)
- 3 Delicate, fragile (6)
- 4 Married to two people at the same time (6)
- 5 Mistake in print (6)
- 6 Shrub with waxy scented flowers (8)
- 9 Bowed structure (4)
- 11 Large South American snake (8)
- 13 Welsh name (4)
- 15 Oxen and cows (6)
- 16 The act of leaving a place (6)
- 17 \_\_\_\_\_ dancing, type of folk dancing. (6)
- 18 Stretched out the body or neck to see better (6)
- 19 Toxic substance (6)

City & Guilds  
NPTC



Crown Reduction - Tree Removal  
Felling - Pruning - Hedge Trimming  
Garden Clearances - **EMERGENCY TREE WORK**



01902 700775 07424 700775

[www.smartcaremaintenance.com](http://www.smartcaremaintenance.com)  
Email: [smartcareproperty@gmail.com](mailto:smartcareproperty@gmail.com)

YOUR  
CHOICE

# BATHROOMS

**Splashing Out on a  
NEW Bathroom?**

**NO VAT  
TO PAY!\***

**WE PROMISE A PRICE WITHIN  
48 HOURS OF OUR VISIT**  
(Daytime and weekend visit are available)

### DISABILITY SPECIAL

Are you having problems getting in & out of your Bath. We will remove the Bath & Fit an easy access low level round, square or oblong cubicle, & Tiled inside. Supply a new replacement shower, A Folding Seat & Grab Rail

**ALL FOR ONLY  
£2550.00**

**NEW  
FITTING  
DATES  
NOW BEING  
RESERVED**



**Experienced, Qualified Tradesmen  
Own and Run This Company  
All work completed in 5 days!**

39 Lichfield Road, Wednesfield, Wolverhampton WV11 1TW

**01902 861908**

Showroom also at: Unit 4, Charterfield Shopping Centre, Charterfield Drive,  
Kingswinford DY6 7SH. **01384 287222**

**SHOWROOMS OPEN 9am-5pm Monday to Saturday**

\* For qualifying cases





## OBITUARY

# Diogo José Teixeira da Silva

4 December 1996 to 3 July 2025

It is with profound sorrow that we mourn the tragic loss of Diogo Jota - the cherished Wolves legend - and his brother, André Silva, following a fatal car accident on 3 July 2025 in Zamora, Spain. The football world has lost two exceptional talents; Portuguese football has lost two sons; and Wolverhampton Wanderers has lost a hero.

Diogo's love affair with Wolves began in 2017, when he arrived on loan from Atlético Madrid. He immediately ignited hope at Molineux with his electric pace, relentless work ethic, and clinical finishing. Over three seasons in gold and black, he made 131 appearances, netting 44 goals, and was instrumental in Wolves' return to the Premier League and the long awaited European nights, moments that still glow in the hearts of every Wolves fan.

Big-hearted on and off the field, Diogo was adored by teammates and supporters alike. At Molineux, scarves, shirts, and flowers now surround the Billy Wright statue - a testament to how deeply he touched this club and its people. He remained humble, always remembering his roots in Gondomar and the friends who cheered him on from the terraces. The memory of his sharp runs and mazy dribbles at Wolves will forever be etched in Molineux folklore.

After a £41 million move to Liverpool in 2020, Jota's star kept rising. He scored 65 goals in 182 games, won the 2024-25 Premier League, FA



Cup, and two League Cups, and delivered key performances for Portugal - including helping them retain the UEFA Nations League in 2025.

Tragically, Diogo and André - also a promising pro at Penafiel - were killed when their Lamborghini veered off the A52 motorway following a suspected tyre blowout.

Diogo was just 28, having married long-term love Rute Cardoso on 22 June and was father to their three young children. The brothers were laid to rest in Gondomar on 5 July, surrounded by family, friends and a nation in mourning.

The outpouring of grief has been immense: from ordinary fans, to Cristiano Ronaldo, Jürgen Klopp and many more, all suffering the loss of two "champions".

For Wolves supporters, Jota represented the epitome of our club's spirit - fearless, industrious, and electrifying. He embodied the "Wolves way" and gave us nights of joy and hope during our revival. Molineux will forever echo with his name and his talent. Diogo's memory lives on in every cheer, every chant, and every future gold-and-black hero inspired by his journey.



***Rest in peace, Diogo.  
Rest in peace, André.  
You'll never walk alone.***

# Can you imagine this Dry Carpet Cleaning

We have dry cleaned carpets & upholstery in over 100,000 homes

*Just say "NO" to wet carpets in your home*

*You will ♥ our dry cleaning system!*

- Removes spills & spots
- Sanitize & deodorise
- Deep cleans & lifts carpet pile

Get Main Room Cleaned  
save **50%**  
on all further rooms  
+ Free Stain Protection

**Picture this... in your home**

**Nice Fresh Clean  
Upholstery on  
Leather • Suede • Fabric**

Locally based family run business.  
Call us for a free quotation on

**07580 027277**

[simon.price@zerodrytime.com](mailto:simon.price@zerodrytime.com)  
Zero Dry Time Wolverhampton



Fantastic service, my carpets came up like new, I would highly recommend them.  
Mrs Cherry

Proud members of

**Checkatrade.com**  
Where reputation matters



[facebook.com/zdtWolverhampton](https://facebook.com/zdtWolverhampton)

**zero dry time**  
Dry Carpet, Upholstery & Hard Floor Cleaners

**We also clean hard floors, tiles inc Grout, Kardean, Amtico and Wooden floors - Ask for a quote**





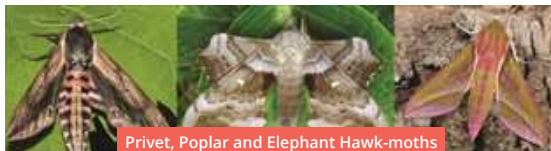
# Wildlife in Wednesfield

I do hope everybody was able to keep cool in the glorious weather we had in early July and were able to sit out in the cooler evenings, which I always think of as the best bit of a hot day.

Walking through the King George V playing fields on our weekly trip to the Vine, my pal Clive and I have been surprised to see bats on a number of occasions. We haven't seen any for a few years, so they've been a very welcome sight.

But it's a different type of flying animal that I want to talk about this month and that is the moth – not the famous MOTH meeting spot in Queen Square but the night-time equivalent of the butterfly.

There are around 2,500 species of moth recorded in the UK, of which roughly 1,850 are micro-moths. Our smallest moth is *Enteucha acetosae* with a wingspan of 3mm and our largest resident moth *Sphinx ligustri*, the Privet Hawk-moth with a wingspan of 12cm, that's forty times greater than our smallest!



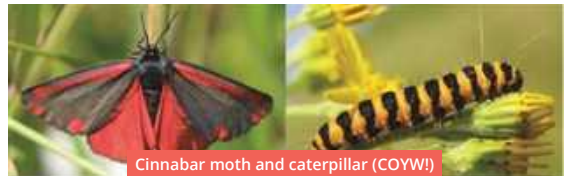
The Privet Hawk-moth caterpillars feed mainly on privet, both our native one and garden privet, so they are common and widespread and will also feed on a range of garden plants.

The Poplar Hawk-moth is also pretty common and widespread feeding on all of the poplar family of trees including aspens as well the fourteen or so willow species of these islands. It has a very characteristic shape at rest.

The final Hawk-moth I want to mention is the beautiful Elephant Hawk-moth which is a beautiful pink and green. Feeding on willow-herbs they are very common.

There a host of other very common moths, many of which you can see in the daytime too. One of my favourites is the distinctive Cinnabar moth. These moths are distinctive too as caterpillars and from my perspective sporting exactly the right colours!

Now, have a look at the pictures above of the Hawk-moths and at the Cinnabar moth and its caterpillar. Do you notice anything? Well, if you think about their food plants the Hawk-moths will pretty much vanish if sitting on their food plant species to lay eggs, but not the Cinnabar moth.



Well, the Cinnabar moth wants to be seen, because this red and black pattern means danger to predators, as do the yellow and black stripes of the caterpillar. The reason for this is the food plant of the caterpillar is Ragwort, a very, very common plant of road-side edges, and Ragwort is deadly to a lot of animals. The caterpillars eat the ragwort and retain the plants toxins in their bodies, keeping them into their form as moths. Even in the heart of cities these caterpillars can be found, because Oxford ragwort, Ragwort's smaller cousin grows profusely wherever there seems to be a crack in pavements.



Another favourite moth of mine are the T shaped Plume moths. You will undoubtedly have seen these at some point in your life, particularly in fields of dry grass or in hedges where convolvulus plants, the bindweeds grow. There are about 40 species of Plume moths, but not all are so T shaped as the common Plume.

Moths have decreased across the UK by 28% since 1968 and in the south by 40%. High numbers of moths are said to be a good indicator of a healthy wildlife. Moths are a vital part of our biodiversity and an important pollinator, particularly of night flowering species of plants and some food crops. They are also an important food source for bats, birds amphibians and reptiles too.

And that brings me neatly back to the park bats. Bats only live where there is plenty of food for them, and bats such as Pipistrelles have to consume about 3,000 insects daily, equivalent to one third of their body weight. So perhaps our wildlife in Wednesfield is OK – that gives me hope!

That's it for this issue, so don't forget to look up, look down, look all around and keep enjoying our wildlife.

*Dave H.*  
[wildlifeinwednesfield@gmail.com](mailto:wildlifeinwednesfield@gmail.com)



# WEST MIDLANDS HIRE VEHICLE RENTAL & CONTRACT HIRE

Part of the Thomas's Group



## GET YOUR SUMMER JOBS SORTED WITH VAN & TRUCK HIRE YOU CAN RELY ON

Moving House



Garage Clearout



Waste Removal



Garden Project



Whether you're moving house, clearing out the garage, or getting stuck into that long-awaited DIY garden project – we've got the wheels to get the job done.

From bulky item transport to waste removal, summer fetes or moving to university, our vans and trucks are ready when you are!

- ✓ Flexible daily or weekly hire
- ✓ Clean, reliable, and well-maintained vehicles
- ✓ Sizes to suit every job – big or small
- ✓ Easy booking & great summer rates

👉 Make your summer move stress-free – book now and hit the road with confidence!



📞 **0121 555 5558**

✉ [info@westmidlandshire.co.uk](mailto:info@westmidlandshire.co.uk)

🌐 [www.westmidlandshire.co.uk](http://www.westmidlandshire.co.uk)

West Midlands Hire, Dartmouth Road, Smethwick, West Midlands. B66 1BG (Part of the Thomas's Group)

## Willenhall Based Will Writer Jim Stanistreet, from BensonWilliams, on Protecting your Assets from Residential Care Fees

---



In 2022 one of my articles in this magazine was on the subject of residential care fees, and it is worth revisiting some of the points made in that article as the one question which clients continue to ask more than any other is “how can I protect my house if I have to go into residential care?”

The issue is serious. Approximately 130,000 people enter some sort of care each year, residential care can typically cost between £40,000 and £50,000 per year, and currently anybody with assets over £23,250 (including their home) has to pay for their own care.

Many people try to avoid the problem by gifting property to their children during their lifetime, but this is highly problematical. A child could go through a divorce, go bankrupt, or die before you, all of which would leave you exposed if your property has already been transferred to them.

Also there are strict rules on “deprivation of assets”, in other words deliberately giving property away with a view to avoiding financial loss if you then need care. If your local authority believe that you have deliberately deprived yourself of

an asset they can treat you as still owning that asset when assessing you for the payment of care fees!

To protect property via your Will the time to act is when a man and wife are both still alive. One of the most common types of Will we have written for married couples over the years incorporates a “property protection trust”.

This is a very simple arrangement which enables husband and wife to each leave their own half of the family home in their Will directly to their children, but subject to the condition that their spouse is allowed to remain in the home unaffected for their lifetime.

If the survivor subsequently needs care it is only their half of the property which they will be deemed to own for assessment purposes, potentially saving the family a five or six figure sum of money!

There are also a number of things which can then be done with the second half of the property, and with any cash in the estate, but these are not generic and specific advice would be needed based on individual families’ immediate circumstances.

Understandably this subject is a major concern to many people, but planning ahead does dramatically reduce the impact it has on your hard earned assets.

For more information you can call **07789 520910** or email **[info@bensonwilliams.co.uk](mailto:info@bensonwilliams.co.uk)**





# WOODEND CARPETS & FLOORING

291 Wood End Road, Wednesfield, WV11 1YQ



**07747 661890    07375 590813**

## FREE MEASURING SERVICE DELIVERY ESTIMATES

### OPENING HOURS

**Mon-Fri    08:30-17:00**  
**Sat        09:00-15:00**  
**Sun        Closed**



📞 01902 637836

**aquabaths**

🕒 9.00am-5.00pm



**WE SUPPLY & FIT**

Offering a wide selection of complete bathrooms, baths, shower enclosures, toilets, basins, taps, bathroom heating, furniture, and accessories.

**We pride ourselves on our exquisite range of bathroom products and outstanding customer service.**

📍 Unit 1, Clothier St, Willenhall, WV13 1BE

[www.aquabaths-ltd.com](http://www.aquabaths-ltd.com)



# Pre-Season Update

## from Wednesfield Community Football Club

---



It's been a busy and exciting pre-season down at The Cottage! A lot of positive developments have been taking place both on and off the pitch. We've made several improvements to the ground, including refurbished stand, refurbished changing rooms, and a general refresh with painting and maintenance across the site.

We're also delighted to announce our new kit sponsors. Our main home kit sponsor is the iconic Black Country Living Museum, and our away kit is proudly sponsored by Trades247. In addition, BSJ Construction & Civil Engineering Ltd will feature as sleeve sponsors for both kits. We're proud to be partnering with such respected local businesses.

Our youth section continues to grow from strength to strength — we now have 19 youth teams, ranging from U8s through to U18s, providing a clear development pathway right through to the Men's First Team. This is something we're incredibly proud of as a Community Football Club — offering local children a place to play, develop, and enjoy football.

The First Team season kicks off on 2nd August, with our first home game scheduled for 9th August at 3pm. It's been a busy off-season for

the First Team as well. Manager Ben Holden has been working hard behind the scenes, bringing in exciting new signings both on and off the field. Joining him this season is Gavin Heath as Assistant Manager, along with two new First Team coaches and two Goalkeeper Coaches — all part of building a strong and competitive squad for the campaign ahead.

Here's what Ben had to say about the season ahead:

*"Looking ahead to the 2025/2026 season, I'm genuinely excited.*

*Most of the group now has valuable experience at this level, and we understand what it takes to win games. We've established a clear identity in how we want to play and approach each match — and the buy in from everyone has been fantastic.*

*The lads have been brilliant during the off-season, with many putting in extra work on their own time. That kind of commitment can only benefit the team moving forward.*

*I'd love to see even more of our proud Wednesfield community coming out to support us. The lads are ready to put on a show and whether we win, lose, or draw, you can be sure we'll give everything for the club and the badge."*

Off the pitch, we also have a packed social calendar! Join us throughout the year for live music events, charity race nights, and our two flagship celebrations — the Annual Firework Display on 31st October, and the New Year's Eve Party on 31st December.

---

For event bookings and venue hire, please contact our Chairman at: **wednesfieldfc2020@gmail.com**

To stay up to date with all club news and events, follow us on social media:

**Facebook:** @Wednesfield Community Football Club

**X (Twitter):** @ClubWednesfield

**Instagram:** @Wednesfield\_communityFC

We look forward to seeing you all down at The Cottage this season!

# Slimming World

feel  
real  
good

Contact our  
consultants for  
current joining  
offers.

Any lost 3st 12lbs  
(24.5kg) in 9 months

**WEDNESDAY**  
**ASHMORE PARK**  
St Albans Church  
Griffiths Drive  
9am  
Debbie 07400 992662

**FALLINGS PARK**  
United Reform Church  
Old Fallings Lane  
5pm & 6.30pm  
Debbie 07400 992622

**WEDNESFIELD**  
Pickering Road  
Community Centre  
3.30pm, 5pm & 6.30pm  
Dawn 07756 234690

**THURSDAY**  
**WEDNESFIELD**  
Pickering Road  
Community Centre  
9am & 10.30am  
Dawn 07756 234690

**ESSINGTON**  
Rugby Club,  
High Hill, WV11 2DW  
5.30pm  
Kim 07900 982494

**FRIDAY**  
**FALLINGS PARK**  
Fallings Park Methodist  
Church  
Wimborne Road  
9.15am  
Kim 07900 982494

**SATURDAY**  
**THE REDEEMED  
CHRISTIAN CHURCH  
OF GOD**  
Stubby Lane  
8am & 9.30am  
Dawn 07756 234690

*Slimming*  
WORLD

touching hearts, changing lives

real food, real support, real results

## INFINITY BEAUTY by Anna

where  
beauty has  
no limits

### Are you ready to elevate your beauty game?

Specialised in everything from stunning lash lifts/brows to rejuvenating facials, relaxing massages, health enhancing B12 injections & more. We are your go-to destination for all things beauty.

- ✓ Eve Taylor facials
- ✓ Microneedling
- ✓ Chemical peels
- ✓ Dermaplaning
- ✓ lift/brow lamination
- ✓ Waxing
- ✓ B12 injections
- ✓ Massages
- ✓ Pedicures
- ✓ Gel Pedicures

📷 infinitybeauty\_by\_anna    📱 Infinity Beauty

📞 07891 018707 | Based in Coppice Farm, New Invention

**OFFER\*:** When advert is shown get **10% OFF TREATMENT**. Applies to treatments £20 and over. Book **TWO TREATMENTS** and **RECEIVE 15%**.

\*new clients only



# City of Wolverhampton Council Appoints Contractor For Improvement Works to Wednesfield High Street

Taylor Woodrow will shortly begin investigatory works to progress the design of the new scheme ahead of main construction works starting later in the year.

Underground service surveys, drainage surveys and trial holes, took place between in June with further investigatory works to follow. Dates are subject to change.

The improvements will increase the vibrancy of the High Street by delivering environmental enhancements to the public realm and markets to encourage increased footfall, linked trips and dwell time to support businesses and boost the local economy.

It follows the council securing UK Government funding for the scheme and extensive consultation and engagement with the public and traders, with the final works set to include:

- Improved paving, lighting, greening and seating in High Street to attract more footfall and investment and support the established markets offer
- Improved pedestrian crossings in the High Street
- More attractive pedestrian access in the south from Bentley Bridge and from the north, linking the High Street with Lichfield Road and the new Wednesfield Technology Primary School
- Improved access and signage from car parks, especially through Bealeys Fold where improved paving, landscaping, lighting and wayfinding will help draw people into the heart of the High Street
- Creation of a new events and activity space to encourage further activation of the High Street



Councillor Bhupinder Gakhal, City of Wolverhampton Council Cabinet Member for Resident Services, said: *"I am delighted we have appointed Taylor Woodrow to carry out these important regeneration works in Wednesfield."*

*"The finished scheme will bring the vibrancy back to Wednesfield High Street and surrounding areas, make it a more welcoming place for all and will boost the local economy."*

Ninder Johal, Chair of Wolverhampton's City Investment Board, said: *"As a board we fought hard to secure funding to support improvements in district centres like Wednesfield and Bilston."*

*"This scheme will make a major difference to Wednesfield High Street and the town centre as a whole, creating a better experience for businesses, residents and visitors."*

Barriers and signs will be in place on street to create space for the survey works. Traffic flows and pedestrian routes will be maintained throughout with minimal disruption expected.

Hours of work will be from 7.30am to 5.00pm, Monday to Friday. Some weekend and night works maybe required but advanced notice will be given.



# Home Help & Personal Care

Delivering expert care, with a personal touch...

Providing at home help with:

- ♥ Shopping, cleaning & cooking
- ♥ Daytime care
- ♥ Night waking
- ♥ Respite
- ♥ Sleep-in service
- ♥ 24 hours live-in care
- ♥ Plus a range of other services

To find out more contact us today:

We provide bespoke  
private care with  
a direct focus on  
personal, social, and  
emotional support



0121 526 4978

info@besscare.co.uk

www.besscare.co.uk



Bess Care Ltd, 9 Wellington Road, Bilston, WV14 6AA

## CP Friends

**For adults with Cerebral Palsy  
& similar disabilities**

**JULY 11th & 25th**

**AUGUST 1<sup>st</sup>, 8<sup>th</sup>, 15<sup>th</sup>, 22<sup>nd</sup>, 29th**

**SEPT 12th & 26th**

**Join Richie for a chat!  
Tea & cake included!**



Creating  
friendships



Making a  
difference

**The Hub at Ashmore Park  
Griffiths Drive  
Wolverhampton  
WV112LH**

**12pm to 2pm**

**Text Jo if you would like to attend  
07707851178**



## Buttercups & Daisies

Flowers for life's  
important moments



16 Market Place, Willenhall,  
West Mids WV13 2AA

Open: Mon, Tue, Wed & Fri 9–4.30,  
Thursday 9–3  
Saturday 9–1

Tel: 01902 632920

[www.buttercupsanddaisies.co.uk](http://www.buttercupsanddaisies.co.uk)



# News In Brief



## Wednesfield Junior Parkrun celebrates 10 years of running, walking, smiles and community fun

On 02 August 2015, 33 youngsters and 13 volunteers took part in Wolverhampton's inaugural junior Parkrun. On Sunday 10 August 2025, we welcome youngsters (accompanied by an adult) to come along to join in the fun and celebrate our 10th birthday.

Since that sunny day a decade ago 1,109 youngsters (aged 4 - 14yrs old) have crossed our finish line 8,465 times, supported by 468 volunteers cheering them along.

Martha Cummings co-founder of the parkrun and founder of Eastpark parkrun in 2019 said *"Parkrun is an amazing community initiative that encourages everyone to get involved as a participant and/or volunteer."*

The event is solely run by volunteers and takes place every Sunday morning (rain or shine) at 9am at King George V Playing Fields on Amos Lane Wednesfield.

If you have youngsters aged 4 - 14 years who would like to come along, or you have some free time and would like to volunteer, please do contact Martha and Rob at: [wednesfield-juniors@parkrun.com](mailto:wednesfield-juniors@parkrun.com)

## Recognize anyone in the Manders photo

A reader has sent in a photo of staff at Manders Brothers and is wondering if anyone can fill in the blanks from the names mentioned.

Sean Cullen from Wednesfield came across the photo which he found in an old newspaper and thought it might bring back some memories for those in the picture or their friends and relatives.

As you can see, some of the names are listed in the caption, but others are missing.

## Do you know who they are?

Let's see if we can get a full set before the next magazine comes out. Please email me: [simon@westmidlandsmagazines.com](mailto:simon@westmidlandsmagazines.com) or text/whatsapp to: **07534 603662** if you know anyone.

*Challenge made!*







OPEN TO TRADE  
AND PUBLIC

## MADE-TO-MEASURE BEDS AND MATTRESSES



Beds



Mattresses



Sofas

☎ 07853 203183 / 0121 568 7802

✉ [midlands.beds@gmail.com](mailto:midlands.beds@gmail.com)

📍 Visit our showroom 51a Salisbury Street, Darlaston, WS10 8BQ  
We manufacture beds and mattresses on site.

Open Mon-Sat: 9am to 6pm, Sun 10am to 2pm.

## HL TREE CARE

**We professionally clean:**

- ✓ Driveways ✓ Paths ✓ Patios
- ✓ Roof soft wash ✓ Block Paving
- ✓ Tarmac ✓ Brickwork and Walls
- ✓ Concrete ✓ Wooden Decking

Sand and sealing available to keep your paving looking its best for longer.

**For all your gardening needs:**

- ✓ Garden clearances ✓ Felling
- ✓ Lopping ✓ Topping
- ✓ Pruning ✓ Pollarding
- ✓ Stumps removed and more...

We also do fencing and gravelling.

**No job too big or small | Local, reliable and affordable**

☎ 07378 368500 | 0121 667 3580

✉ [hltreecare11@gmail.com](mailto:hltreecare11@gmail.com)



# Wednesfield Therapy Centre

At Wednesfield Therapy Centre we offer a range of different creative classes and workshops which include:

- Introduction to the Sewing Machine.
- Introduction to Free Motion Embroidery.
- Advanced Free Motion Embroidery.
- Creative Workshops.
- Mindfulness Painting Classes.
- Children's Creative Workshops.

Wednesfield Therapy Centre, 12 High Street,  
First Floor, Wednesfield, WV11 1SZ.

Email: [wednesfieldtherapycentre@gmail.com](mailto:wednesfieldtherapycentre@gmail.com)

Facebook: Wednesfield Therapy Centre

01902 723527

Established for  
over 20 years.



## Joi Wellbeing

Your health and wellbeing is our priority

**CLINICAL COMPLEMENTARY THERAPY**

*Do you want to improve your physical,  
emotional and mental wellbeing?*

## Our Service

- **Clinical Reflexology**
- **Massage / Manual Lymphatic Drainage**
- **Reiki**
- **Clinical Aromatherapy/ Aromatherapy Massage**

**07455985195 and 01902 723 527**

**Wednesfield Therapy Centre**

**12 High Street WV11 1SZ**

- **May Improve Stress**
- **Anxiety relief**
- **Sleep**
- **Muscular pain management**
- **Improve circulation**
- **Detoxification**
- **Hormonal balance**
- **Boost immune response**



**Contact Us**

# New Beginnings Acupuncture

Acupuncture & Pain Management

## Tired of Living in Pain?

**Reclaim your life with natural, effective treatment**

Acupuncture can help with:

- ✓ Trigeminal Neuralgia
- ✓ Lower Back Pain
- ✓ Sciatica
- ✓ Shoulder & Neck Pain
- ✓ Neuropathy
- ✓ Arthritis



**Tiago Marques, AAC**

Licensed Acupuncturist



**Holistic approach to healing**



**Personalised treatment plans**



**Calm, professional clinic environment**



**01902 288142**



**tiago@nbacupuncture.com**



**12 High St, Wednesfield, Wolverhampton WV11 1SZ**

**CALL NOW TO BOOK  
YOUR CONSULTATION!**

**Feel better. Move better. Live better.**

# Feel the Beat of the City: Live Grassroots Music

**Friday 15th August 2025 | 11:00 – 16:00**  
**Victoria Street, Wolverhampton**

This summer, Wolverhampton is turning up the volume on local talent! As part of **Together for Music 2025**, join us at the heart of the city for an exciting **Musical Showcase** in Bell Street Square (Pedestrian Zone) on **Friday 15th August 2025**, from **11:00 to 16:00** — and discover the sound of grassroots music like you've never heard it before.

Hosted by **Kupid the King** – one of Wolverhampton's most influential RNB and Hip Hop artists – the show promises an unforgettable afternoon of music, rhythm and raw talent. With his trademark charisma and deep connection to the local music scene, Kupid will guide audiences through a packed programme of performances that celebrate the city's creative spirit.

Expect an electrifying line-up of **local performers**, featuring the vibrant rhythms of **live dhol drumming**, hard-hitting **rap**, soulful **singing**, and powerful **spoken word**. All the talent on display is homegrown, representing the very best of Wolverhampton's thriving grassroots scene.

**Together for Music 2025** shines a spotlight on emerging voices, bringing people together through shared rhythms and real stories. Whether you're taking a break from shopping or planning your afternoon around it, this is the perfect way to experience Wolverhampton's rich cultural heartbeat, right in the city centre.

The event is **free to attend** and open to all. Come along, bring your friends, and support the voices shaping the future of local music. You don't want to miss it!

**Diversity Music**  
Putting the Community 1st

**TOGETHER FOR MUSIC 2025**  
Friday 15th August 2025  
live music in  
Victoria Street

**ARTS COUNCIL ENGLAND**  
Supported using public funding by  
LOTTERY FUNDED



# Clear View

MISTY, BROKEN  
DOUBLE GLAZED UNIT  
REPLACEMENT SERVICE

REPLACE THE **PANE**,  
NOT THE **FRAME**!



Contact us for a free no obligation quote:

0121 526 2543 | George 07958 493 577 | Nick 07976 462 482

Unit 6 Victoria New Works, Midland Road, Darlaston WS10 8HE

Your LOCAL COMPANY  
and we're up to  
**40% Cheaper**  
than National Company  
Prices!



**6** Verticals or  
Rollers  
just  
**£399!**  
Fitted!

## Spring Deals!

Offers  
end  
May 17th



Romans  
**25%  
OFF!**



Day/Nights  
**30%  
OFF!**



White Wood  
Venetian  
Blinds  
**20%  
OFF!**

- \* Vertical
- \* Roller
- \* Skylight
- \* Venetian
- \* Roman
- \* Day/Night
- \* Perfect Fit
- \* Conservatory
- \* Wood
- \* Shutters Lite New!

**GAILS**   
**BLINDS**

SHOWROOMS

23 Union Street Bilston  
(Springvale Ind Park)

Stand 57  
Bilston Indoor Market

# BLINDS

**FREE QUOTATIONS!**

**Call 01902 752450**

or book online at

**[www.gailsblinds.co.uk](http://www.gailsblinds.co.uk)**



*Does your house suffer from any of these:*

- PENETRATING DAMP?
- CRACKED RENDER?
- POOR APPEARANCE?
- SPOILED BRICKWORK?

***PROBLEM SOLVED:***



**Desktop quotes & Small local showroom**

Call, email or WhatsApp your details for a free quote

**01902 498 953 - 07973 314 644**



**Established for over 30 years - All work guaranteed**

**PRICES NOW HELD UNTIL JULY 2025**

**43 Broad Street, Bilston. WV14 0BU**

***info@ecotexcontracts.co.uk***

# Ashmore Glass & Mirrors Ltd

## Window Repair Service



**Condensation in your double glazing?**

**We have the answer!**

**LET us keep you in the frame. Upgrade your old windows to :-**

- New Energy Efficient
- Glass units. (A Rated)

**We can change:-**

- Window locks
- Door locks
- Steamed up double glazed units
- Mirrors
- Shelves
- Security upgrades
- 24 hour lock smiths
- Broken Hinges

**Please call for details: Wolverhampton - 01902 488334**

**Walsall or Willenhall - 01922 400029**

**Freephone - 0800 980 9620**

Units 17, 18, 19, 29, 30 Essington industrial Estate, Bognop Road, Essington WV11 2BA



**Fast, reliable, and affordable roofing services you can trust**

**Call 0800 145 5176 for a free quote**

**www.rosedalerroofing.co.uk**

**NEW ROOFS | FLAT ROOFS | ROOF REPAIRS | EMERGENCY ROOFERS | CHIMNEY WORK | ROOFLINE SERVICES**



**ALL WORK GUARANTEED | FREE QUOTE | FAMILY-RUN BUSINESS | FAST LEAD TIMES | 24HR CALLOUT**

- |                           |                                |                                     |
|---------------------------|--------------------------------|-------------------------------------|
| • Repairs & Installation  | • Fascias & Soffits            | • Fully Insured & Qualified Roofers |
| • New Roofs               | • Guttering                    | • 24/7 Emergency Roofers            |
| • Flat Roofs              | • Roof Cleaning & Coating      | • Fully Insured                     |
| • Roof Repairs            | • Roof Surveys                 | • Residential & Commercial Experts  |
| • Roof Cleaning & Coating | • Roof Cleaning & Moss Removal | • All Work Guaranteed               |

**Wood Farm Cottage, Willenhall, Wolverhampton, West Midlands, WV12 5NF | info@rosedalerroofing.co.uk**



# Wolverhampton Veterans in the Community: Friendship, Support and Belonging

For many veterans and their families, life after service can sometimes feel isolating. But thanks to the dedicated work of *Wolverhampton Veterans in the Community*, that needn't be the case. Under the leadership of Chair *Roy Hollingsworth*, this remarkable organisation provides a warm and welcoming space for ex-service personnel and their loved ones to meet, chat and support one another.

The group operates across three locations in the city, each offering a weekly drop-in session where camaraderie is at the heart of everything they do. In *Wednesfield*, meetings take place



at the Conservative Club on Neachells Lane every **Monday from 11am to 1pm**, run by *Patricia Radford*. The *Bilston* group is led by *Sue Cummons* and meets **Wednesdays from 2pm to 3pm** at the Lunt Community Centre. The *Wolverhampton* group meets at the RAFA Club on Goldthorn Road every **Tuesday from 2pm to 3pm**, and is led by *Kim Goss*.

These gatherings are more than just social events. For members like *Val and Conrad Astbury*, the sessions provide a valuable reason to get out of the



house and connect with others. “*It gives us a big boost once a week. It’s like an extended family,*” they said. *Mary Edwards*, whose late husband *Joe* served in the forces, says the group brings her comfort and keeps her connected to old friends.

The organisation has been fortunate to receive backing from the local community. The Vine pub in Wednesfield raised an impressive £1,000 through a raffle, and *Bilston Councillor Rashpal Kaur* generously donated £400 from her ward budget. *Sam Axtell* of *Wolverhampton City Council*, who oversees the Armed Forces Covenant, also secured an additional £250 in support. These funds help to cover room hire costs, group trips—including a recent visit to Windsor Castle—and even mobility scooters for members who need assistance.

Now, the groups are reaching out to welcome new faces. Whether you’re a veteran yourself or have a family member who served, you’ll be warmly received. There’s no need to book—just turn up, grab a cuppa, and say hello.

For many, *Wolverhampton Veterans in the Community* is more than a club. It’s a lifeline, a friendship circle, and a place to belong.

# C&N Electrics

NICEIC Registered and Part P Approved  
18th Edition 2nd Amendment Electrical Contractor

## Carl Tomlinson

c.tomlinson1988@hotmail.co.uk

Domestic, Commercial, Industrial, EV Chargers  
and EICRs all Undertaken

Call for a FREE quotation

# 01902 590479

# 07411 184436



## J L Garden & Tree Services

Garden Maintenance & Tree Felling

Tree Felling  
Garden Maintenance  
All Debris Removed

Call Jason for a No Obligation Quote  
Fully Insured

Tel: 01922 443193  
Mob: 07809 431703

Visit Website for FREE call back  
www.jlgardenandtreeservices.co.uk




## A.F. Gardening Services

We offer a range of different services to suit your needs, which include:

- ✓ Grass Cutting
- ✓ Planting Flowers
- ✓ Hedge Trimming
- ✓ Fence Painting
- ✓ Garden Maintenance
- ✓ Garden Clearance

Email: [afgardeningsservices@outlook.com](mailto:afgardeningsservices@outlook.com)

If you would like a free quote please call us on:  
**07464 465602**




## EarwaxDoc Ltd

### ENDOSCOPIC EARWAX MICROSUCTION

Safe & effective earwax removal using latest endoscopic technology. Guaranteed same day service.

At our clinic or in your own home

**T: 01902 918843 | M: 07897 832997**  
**E: [earwaxdoc@gmail.com](mailto:earwaxdoc@gmail.com)**  
**W: [www.earwaxdoc.co.uk](http://www.earwaxdoc.co.uk)**



## DP Plumbing & Heating

Domestic & Commercial Plumbing

- Heating & Gas Appliances
- Servicing
- Breakdowns
- Installations and Upgrades

Call Darren on  
**07772 878573**  
or **01922 449238**

Email: [dnpearson@ymail.com](mailto:dnpearson@ymail.com)



Over 30 years' experience



## Andy's Window Company

- Replacement units
  - Locks
  - Handles
  - Hinges
- Conservatory roofs

**37 years experience**  
**free quotes - all work guaranteed**

Call Andy on **01902 604955** or **07415 319322**




## Advertise your domestic service in this section from just £30.

For more info, e-mail  
[wednesfieldmagazine@yahoo.co.uk](mailto:wednesfieldmagazine@yahoo.co.uk)  
or ring **07534 603662**

# Wednesfield magazine





# Sureena Brackenridge MP

Your Member of Parliament for Wolverhampton North-East



It's been a busy time in Wolverhampton and Wednesfield in these last two months, but I have been nowhere near as busy as the fantastic team at Wednesfield in Bloom!

Just like every year, they've pulled out all the stops and delivered a fantastic show for our village!

If you've been anywhere near Wednesfield, it is absolutely impossible to have missed what they've done. From the High Street, to the Amphitheatre, to the Church and Gurdwara, and even across Ashmore and the Hub, they've brought Wednesfield to life with their incredible vibrant displays.

I was lucky enough to join some of the team on one of their litter picks while they told me about their work, and it was wonderful to chat to so many of you as you were passing and enjoying the blooms.



There are so many things to be proud of in our wonderful community, and Wednesfield in Bloom is one of those special ones.

I really would like to take this opportunity to give them an absolutely massive shout out, and give them the biggest thank you! To all the organisers, regular volunteers, and to all the people who just mucked in, thank you so much. Your work has really shown!



A massive good luck to you in the judging, as the Heart of England in Bloom judges came to check out your work. The team have had so much success in the past, with silver and gold medals, and special recognition for their work in urban environments.

We all need to get behind the team as they go for gold!

While I've focussed mainly on Wednesfield here, it's also been an important time in Westminster. I've been busy on the Education Select Committee, speaking up in favour of work experience, vocational training, and better opportunities for SEND students.



In Parliament we have also been working on legislation to better protect workers, improving parental leave, closing loopholes on fire and rehire, and improving rights for families who have sadly lost a baby.

There's been so much work done, but lots more to do.





## Specialists in Wills, Property Protection, Probate and Lasting Powers of Attorney



Based in Wolverhampton, Emer Morris LLB (Hons), director of Evergreen Wills Limited has provided a will writing service in the area for over 15 years.

She is a member of the Institute of Professional Will Writers and has many satisfied clients and families in Wolverhampton, Dudley and the surrounding areas.

There are no forms to fill in. We listen to your needs and give advice based on individual circumstances. We visit you in your own home with the initial consultation being free of charge with no obligations.

As a small firm we are able to provide a personal service to our clients taking time to discuss your needs and wishes as an individual.

**GOING THROUGH  
A STORM  
OR JUST BEEN  
THROUGH ONE?**

**ANDYSMANCLUB**  
are talking  
groups for men to  
**HELP YOU** through  
those storms.



**FIND OUT  
MORE** [info@andysmanclub.co.uk](mailto:info@andysmanclub.co.uk)  
[www.andysmanclub.co.uk](http://www.andysmanclub.co.uk)

**#ITSOKAYTALK**

**ANDYSMANCLUB  
WOLVERHAMPTON**

**WOLVERHAMPTON**  
University of Wolverhampton  
The Science Park,  
Glaisher Drive,  
Wolverhampton,  
WV10 9RU

**EVERY MONDAY  
@ 7PM EXC.  
BANK HOLS**

ANDYSMANCLUB LTD is a  
Registered Charity in England  
and Wales (1179647) Scotland  
(SC051485) and a Company  
Limited by Guarantee, registered  
in England and Wales (11118153)

# Trusted Trade Partner for the Supply & Installation of



**ColourFence - "It Just Makes Sense"**  
Maintenance Free Forever



Guaranteed For A  
Minimum Of 25 Years  
Withstands Gusts  
Up To 130mph  
100% Recyclable  
Professional  
Installation Available  
Fire Proof  
Affordable Quality

"It Just Makes Sense"

Ranges:  
ColourFence  
ColourRail  
ColourGate  
ColourShed



★ Trustpilot  
★★★★★  
Rated Excellent

**NEW**  
Black Fencing  
Available



ColourFence Pedestrian Gate



ColourFence Driveway Gate



ColourFence Contemporary Trellis



ColourFence Traditional Trellis



ColourFence Gates



ColourRail



ColourRail Gates



ColourShed

**For Your Free Quote - Contact Us Today**

07872 600 633 or 01902 787 218

andrew.limer@midlandsfencingsolutions.co.uk

[www.midlandsfencingsolutions.co.uk](http://www.midlandsfencingsolutions.co.uk)

Cleveland Arms and Sportstalk Events presents:

# Wolves PLAY-OFF HEROES

An evening of chat with **THREE** stars  
from *THAT* Play-off final in 2003.  
**COLIN CAMERON, MARK KENNEDY**  
and **ALEX RAE**

**AUGUST 14 | 8pm**

VIP Entry: 6.30pm | Standard Entry: 7.30pm

Hosted by **Matt Murray**



TICKETS: VIP £35 (including studio photo &  
reserved seating) Standard £15



Tickets available from  
[www.clevelandarms.com](http://www.clevelandarms.com)  
or call 01902 451021

**Cleveland Arms, Stowheath Lane, Wolverhampton, WV1 2QN**





# Wednesfield in Bloom

## Judging Day Arrives



As you can imagine the last few months have been very busy for the Bloomers.

We started May with planting the railing planters so the plants could become established before putting them out in June.



The end of May saw our annual Plant Giveaway, the day started with drizzle but as the morning progressed the sun shone and the stall became very busy, we also had a recycled

bottle for the children to plant up which was a great success. All of the plants found new homes and we hope they are being enjoyed.

We continued to plant out through June and then the task of keeping it all alive throughout the heatwaves began!



June also saw the start of the new mural under Church Bridge, we were lucky to have help from Bagnalls who painted the area white to give Terry Glazebrook, our artist, a 'blank canvas', his brief was children and nature and I'm sure you will agree it looks fabulous, brightening up the area tremendously. Every time we look at it we find something new! Can you find the peacock, owl and dinosaur?

We again hosted Black Country Brass and great fun was had by all, joining in singing or playing percussion.







The culmination of all the hard work came on 11<sup>th</sup> July with a visit from the Heart of England in Bloom Judges. The route took them from the Hub at Ashmore Park, along the shopping parade, down the Lichfield Road via the new island, popped into the Wednesfield Technology Primary School and the Vine to the High Street the Amphitheatre and finished at the Gurdwara for refreshments. They seemed happy and made positive comments as they left, unfortunately we don't find out the result of their deliberations until 21<sup>st</sup> October!



We would like to say a big 'Thank you' to anyone who has supported us in any way this year, whether it be by buying something from the Crafters, donating, decorating their shop windows, bringing us refreshments when we are working or just giving us words of encouragement – it all makes it seem worthwhile.



We would also like to thank Owens who helped tidy up, cleaning road signs and windows amongst other things, the schools who grew potatoes, Westcroft Plant Nursery, the Hollybush Garden Centre, Caitlin Jefferies our photographer and Terry Glazebrook ([www.terryglazebrook.co.uk](http://www.terryglazebrook.co.uk)) who worked in the heat and has the bruises to prove he worked under the bridge!

It is great to have so much to tell the Judges about the people of Wednesfield not just what we have planted.



---

If this has inspired you to join us there is still plenty to do this year contact us on Facebook, email: [wednesfieldinbloom@gmail.com](mailto:wednesfieldinbloom@gmail.com) or call Julie on: **07904 573443**.

# STEPHEN TURNER

CARPENTRY, JOINERY & PLASTERING SERVICES

ALL DOMESTIC JOBS CONSIDERED  
NO JOB TOO SMALL

**07891 642770**

@ stephenbrynturner



## WEDNESFIELD WINDOW CLEANING & PRESSURE WASHING

We offer a range of services to suit your needs, including:

- Driveway.
- Roof cleaning.
- Patio.
- Gutter cleaning.
- Conservatory.
- and more

**FREE QUOTE AVAILABLE**

**07752 345609**

www.service@yahoo.com



## DB Gas Installations

INSTALL SERVICE REPAIR

**Full heating systems**  
**Boiler changes Servicing Bathrooms**  
**Landlord gas safety checks**

**Tel: 07984 253307**  
**Email: dbgass83@yahoo.co.uk**

safe



## Abstract Blinds

*Quality Window Blinds*

like us on | facebook

Family run business  
established 2003

We provide a professional supply and installation service of excellent quality window blinds to suit your budget.

Tel: **01902 656688**  
Email: **abstractblinds2017@gmail.com**  
Website: **abstractblinds.co.uk**

Proud to have over 100 5\* star reviews showcased on Best of Walsall.



## Rainbow Plumbing and Bathrooms

Professional service for all your jobs, large or small.  
Call the **MAN THAT CAN**

Tel: **01902 250444**  
Mobile: **07824 633323**  
email: paulhodgson35@hotmail.co.uk



## R&G Satellite Services

Aerial And Satellite

www.randgsatelliteservices.com

### Satellite

### Digital Aerials

### Multi-Room

### Alarms • CCTV

*All types of work undertaken*

Please call Gary on  
**01902 519230**

TRUST MARK  
Best of British Service  
www.trustmark.co.uk

cai  
Trade Association for  
Customer Delivery



## gutterGo

Complete guttering service

- Guttering cleaned • Repairs & full replacements
- Fascias and soffits washed down
- Dry verge fitted • Roof repairs

**CONTACT US FOR A NO OBLIGATION QUOTE**

07887 705012 / 0121 601 1548  
karl@guttergo.services  
Find us on the **nextdoor** app  
just search "GutterGo"





## JENNIFER ASHE & SON

FUNERAL DIRECTORS



Multi Award Winning Independent Family Funeral Directors

Supporting families across the West Midlands and Staffordshire

### Cremation Packages

Direct Cremation Package	£1,395
Simple Cremation Package	£3,295
Traditional Cremation Package	£3,795
Premium Cremation Package	£4,795
Horse-Drawn Cremation Package	£4,895

### Burial Packages

Direct Burial Package	£1,495
Simple Burial Package	£1,995
Traditional Burial Package	£2,495
Premium Burial Package	£3,295
Horse-Drawn Burial Package	£3,495

Willenhall (Head Office)

Oxley Branch

Brownhills Branch

Hednesford Branch

Walsall Branch

Lichfield Branch

19-21 New Road, Willenhall West Midlands, WV13 2BG

1-2 Three Tuns Parade, Stafford Road, Oxley, WV10 6BF

78 High Street, Brownhills, West Midlands WS8 6EW

36 Market Street, Hednesford, Staffordshire WS12 1AF

17 Liskeard Road, Walsall, West Midlands, WS5 3EY

3 Swan Road, Lichfield, Staffordshire, WS13 6QZ

01902 937572

01902 271748

01543 378022

01543 406315

01922 438503

01543 221248

[www.jafunerals.co.uk](http://www.jafunerals.co.uk)



*Flowers by Jennifer Ashe*

95a New Road, Willenhall, WV13 2BG

01902 92 11 85 | [www.jaflowers.co.uk](http://www.jaflowers.co.uk)

*"Floral Elegance, Locally Delivered"*



A family-run florist in the heart of Willenhall, Flowers by Jennifer Ashe offers beautifully arranged fresh flowers for every occasion — from birthdays and anniversaries to new home celebrations, romantic gestures, sympathy flowers, and funeral tributes.

As proud members of the Interflora network, we offer same-day local delivery in Willenhall and surrounding areas — ensuring your thoughtful gift arrives on time, every time.





# Memories of Our Wednesfield

## Local Historian Ray Fellows looks back at the most important day in the history of Wednesfield

The year 2025 will mark 1115 years since the battle of Wodensfield took place here on the field of Woden on August 5<sup>th</sup> 910.

We look at what evidence we have that proves that the battle took place here in and around our village. Our main source of information is Aethelweard but there are plenty of other historians who say that the battle took place here.

Aethelweard wrote the *Chronicom*, a Latin translation of the Anglo Saxon Chronicle. The *Chronicom* details events that took place between the years 860 and 975. One of the most important events in the *Chronicom* is that of the battle that took place here on the 5<sup>th</sup> day of August in the year 910.

In the year 910 King Edward the Elder, leader of the West Saxons, Aethelred and Aethelflaed Lord and Lady of the Mercians joined forces to fight the might of the Viking army. Edward and Aethelflaed were son and daughter of King Alfred the Great. Alfred was an unshakable pillar of the West, a man full of justice, active in war and learned in speech.

### Aethelweard

*"After one year the barbarians break their compact with King Edward, and with earl Ethered, who then ruled the provinces of Northumberland and Mercia. The lands of the Mercians are laid to waste on all sides by the hosts aforesaid, as far as the streams of the Avon, where begins the frontier of the West-Saxons and the Mercians.*

*"Thence they pass over the river Severn into the western regions, and gained by their devastations no little booty. But when they had withdrawn homewards, rejoicing in their rich spoils, they passed over a bridge on the eastern side of the river Severn, at a place commonly called Cantabridge, the troops of the Mercians and West-Saxons met them: a battle ensued, and in the plain of Wodnesfield the English obtained the victory.*

*"The Danish army fled, overwhelmed by the darts of their enemies: these things are said to have been done on the fifth day of*

*August; and their three Kings fell there in that turmoil or battle, namely, Halfdene, Eewils, and Hingwar: they lost their sovereignty, and descended to the court of the infernal King, and their elders and nobles with them".*

After victory the Saxons named this place after their ancient God of war, Woden. The battle was fought on the field of Woden, Wodnesfield.

Other historians who say the battle was fought here.

## Hackwood in his "Annals of Willenhall" 1908

Hackwood says that Earl Kenwolf, who reinforced the Anglo Saxons in the battle, was mortally wounded near his estate at Stow Heath, after the Danes had fought a battle with little advantage for many hours. He further states that *"the Danes had posted themselves at Wednesfield following their pillaging expedition"*.

## The Rev. Stebbing Shaw's "History of the County of Stafford"

Dated 1798 compiled from manuscripts of Huntbach, Loxdale, Bishop Lytteton, Rev.T.Feilde. Erdeswicke's Survey, and in particular Dr Wilkes the Willenhall antiquary and Dr Robert Plot's

## "Natural History of Staffordshire 1686"

Huntbach and Dr Plot agree that the battle was fought here and Henry of Huntington gives the same account of this battle, but differs a little in the names of the great men, making them one more in number

Whites Directory 1834, in doomsday book, this place is called Wodnesfelde, (from Woden, the Saxon God of battle,) it is memorable as the scene of a decisive victory which Edward the Elder obtained over the Danes in 910.

In St. Thomas' Church one of the stained glass windows depict the battle this was placed there in the early part of the 1940s.

There are other accounts by historians that say the battle was fought in and around our village.

There should now be no doubt whatsoever  
**THAT THERE WAS A BATTLE FOUGHT HERE  
BETWEEN THE SAXONS AND THE DANES  
ON THE FIFTH DAY OF AUGUST 910.**

## A few dates for your diary

Wednesfield History Society annual history fair will be held at Bethany Chapel, Prestwood Road, on Saturday 2nd August, 10.am till 4.00pm please see poster.

The Canal Festival this year takes place on Saturday and Sunday the 9th and 10th of August. The History Society will be having a stall on the Saturday and we will be accompanied by a Viking re-enactor who will have various weapons on display of the Viking period. Come and have your photo taken with him.



Battle of Wodensfield re-enactment

There will be some free Battle of Wednesfield booklets available to those who are interested in learning more about the battles between the Saxons and Vikings.

Wednesfield History Society's next general meeting will be held at St Thomas's centre, Church Street on Wednesday 20th August 11.00.am. There will be film of the Lancaster Memorial and other interesting items about our village, new members always welcome

We at the History Society and those that made it possible for the event to take place would like to thank Lay Minster Terry Braithwaite for conducting the service and all those who

**Local History Day**  
**2nd August 2025 10am-4pm**  
**Bethany Chapel**  
(corner Blackwod Avenue & Lower Prestwood Road)  
hosted by  
**Wednesfield History Society**  
including  
**Wednesfield Burial Ground Project**  
**Wednesfield Model Village c1900**  
**Willenhall History Society**  
**Friends of Wolverhampton Archives**  
**Midland Ancestors**  
**The Wolverhampton Society**  
**Staffordshire Regiment Association**  
(Wolverhampton Branch)

turned up to pay their respects to the crew of the Lancaster.

Also, our thanks go to the Battle of Britain Memorial Flight for the Lancaster Flypast that made it a very emotional day, thank you.

We apologise about the picture of the Lancaster crew in the June-July issue, we missed off Ronnie O'Donnell [Blame the Editor!].



Ronnie O'Donnell

**To win a £20 Sainsbury's gift card, just answer the following question;**  
**What was the name of Lady of the Mercians?**

Please send your answer to: 24 South Avenue, Wednesfield WV11 1QL  
or email me at: fellows.raymond@yahoo.co.uk

**Entries must be received by Monday 18th August.**

If you have any stories or photo's you want to share, just send them to the above address.



THURSDAY 9 OCTOBER



# THE BLUEBIRD BELLES

## Shake, Rattle & Roll

**BILSTONTH.CO.UK**  
CHURCH STREET | BILSTON | WV14 0AP







By Victoria Wynn

# Walking Woden



I suppose you could call me an urban explorer, of sorts. I like to go walking round Willenhall and Wednesfield, or 'Woden' as I call it. This urge hit me later in life, as grey hairs set in and sciatica took hold. The younger me couldn't wait to get out of the Black Country. Now I can't think of a more perfect place to be. Isn't it funny how your ideas of who you are change over time? Turns out I was a Woden Wench all along, with a Woden heart and Woden feet born to walk these streets. This is where I belong.

Everywhere I go there's a park or alleyway to discover. You might consider me silly for going on about it. After all, it's not like we're on anyone's '100 Places to Visit Before You Die'. But I like it. There's joy in finding something you didn't know existed before, or seeing something differently that you've walked past a million times. Like a tall row of conifers in the distance standing dark and forbidding like guardians over the sky, or a neighbour's rhododendron bush blooming. All these sights fill me with wonder and I am a child again, grey hair and sciatica forgotten.

Take this walk for instance on the border between the two towns. Down Broad Lane I stroll, a road in Wednesfield notable for its grand, detached houses. I take in the deep front gardens, the well-kept driveways and elegant facades and think to myself, 'I wonder what it's like inside there?' But I

never let my gaze linger long lest I be arrested for loitering (quite rightly so).

I reach the Lichfield Road, quiet at this early hour. I then bear right (or 'northeast' in explorer parlance) and walk a little way down. I see what was once a farmhouse, set back from the road and wonder how long it's been there. Walking a few steps further, I stumble across a path I've never noticed before, flanked on one side by the Coppice Estate with its neat rows of boxy brown houses and Coppice School on the other. But what I see in the distance is what really matters: a green field.

So, I follow the path, my heart beating louder till it rings in my ears. I reach

my goal, the wide-open vista of a meadow stretching out on every side. The sun rises to say hello. Flocks of starlings fizz and buzz in the long grass, making conversation over breakfast. Standing here, I feel like the only person in the world. Everything is fresh and new and wondrous. I see other paths too. They beckon to me, but those are adventures for another day. For now, I am content in the magic of this moment, of being grateful for existing in this time and place. And as local people walk by with their dogs, they wonder, 'Who is this lunatic grinning into the sunshine?'

The answer of course is that it is me, silly and small, a girl born again in the everyday wonder that is Woden.



# E.ARROWSMITH & SON

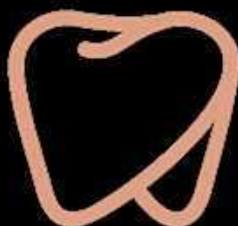
*All roof & property repairs*

- Rubber & felt flat roofs
- Chimneys pointed & repaired
- Ridge & Apex Tiles re-bedded
- Valley repaired or replaced
- UPVC fascia, soffits & guttering
- Dry Verge
- Guttering replaced or repaired
- Public liability insurance £1m



**For your FREE ESTIMATE call 01922 477754**

*No job too small • 185 Broad Lane, Essington, WV11 2RH*



## Cannock Road Dental Practice

**We believe that excellent care should be available  
at a fair price to everyone**

**New patient examination inclusive of all x-rays £40**

**CALL 01902 722222 // 108-110 Cannock Road, WV10 8PW**

**[www.cannockroaddentalpractice.co.uk](http://www.cannockroaddentalpractice.co.uk)**



# What a Lot for Teenagers to Do

Since opening in the middle of 2024, the 2nd Wednesfield Explorer Scout Unit have gone from strength to strength. The Explorer Unit (for boys and girls aged 14 to 17) opened last year due the retention of Scouts in the Group and those young people wanting to have another section where they could continue their Scouting; it now has fourteen members.



With activities including shelter building, war hammer, camping, games, skiing, trampolining in a cave, climbing Jacob's ladder, making fires and cooking, there is something for everyone.

Ola, who had not been involved in Beavers (boys and girls aged 6 to 8), Cubs (boys

and girls aged 8 to 10) or Scouts (boys and girls aged 10 to 14), joined after having conversations with friends at school.

They told her about some of the activities they did and so she went along and decided to stay involved. Ola said, *"The skills I have developed are communication, encouragement teamworking and awareness of situations."*

She added, *"I got taken out of my comfort zone when we were going to climb Jacob's Ladder. As I stood at the bottom, I thought 'I can't do this'. When I stood at the top there was a feeling of pride that I had overcome my worries and made it to the top."*

Phoebe said that she had made new friends, had been camping and helped at camp. She added, *"I decided to become a young leader and help at one of the other sections in the Group."*

*I thought it would help me improve my communication skills when explaining an activity to the children. It helped me get a part-time job at a local company as I was able to include lots of examples on my CV."*

Volunteer Martin said, *"I volunteer as it's important that young people have somewhere to go and activities to do. I get an enormous amount of satisfaction seeing the Explorers doing something different, helping each other or overcoming any concerns or fears they have."*

*It's great to see young people grow and develop during their time in Explorers. Some of them are helping with the*

*younger sections and some of them want to become volunteers when they become 18."*

In the last two years the number of children (aged 6 to 14) has increased by nearly 12%. The Group are now looking at the possibility of opening a Squirrels Drey (for boys and girls aged 4 to 6).

If you are interested in your son/daughter joining any of the sections or you would like to volunteer, please contact **[Martin.jefferis@wolverhamptonnorthscouts.org.uk](mailto:Martin.jefferis@wolverhamptonnorthscouts.org.uk)**



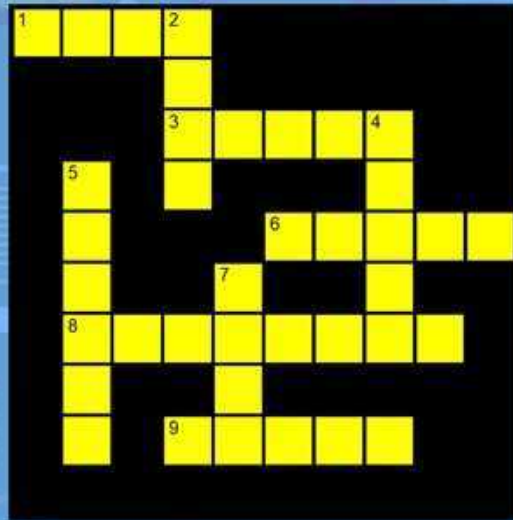


# Kids' Page

ACROSS

Can you solve our park crossword?

DOWN



Everyone is tangled up. Who does the dog belong to? AND WHO OWNS THE TRUCK?



Puzzle Solution

# Useful Information & Telephone Numbers

## Community Hubs/Centres

Ashmore Park .....	01902 552490
Long Knowle .....	01902 552442
Low Hill .....	01902 552312
Wednesfield .....	01902 552218

## Local Councillors/MP

MP Sureena Brackenridge. ....	07438 663282
-------------------------------	--------------

### Wednesfield North

Cllr Mary Bateman.....	01922 403960
Cllr Phillip Bateman .....	01922 403960
Cllr Rita Potter.....	01902 654599

### Wednesfield South

Cllr Greg Brackenridge .....	07552 211600
Cllr Ciaran Brackenridge .....	07890 964296
Cllr Jacqui Coogan .....	07919 626063

### Long Knowle

Cllr Steve Evans .....	01902 861498
Cllr Val Evans.....	01902 861498
Cllr Christopher Burden.....	07971 843811

## Emergency Services

Anti Social Behaviour Unit.....	01902 551188
Crime Stoppers (anonymous) .....	0800 555111
Electrical emergency .....	0800 328 1111
Flood line.....	0845 9881188
Gas emergency.....	0800 111 999
Police/Fire/Ambulance .....	999
Police (non emergency).....	101
(Out of hours emergency) .....	01902 552999
Water emergency .....	0800 7834444

## Health Organisations

Alfred Squire Medical Centre .....	01902 575000
Alfred Squire Health Centre.....	01902 575000
Dr Libberton & Dr Ram - Cann Rd.....	01902 739973
Heath Town Medical Ctre .....	01902 456211
Mayfield Medical Centre .....	01902 351666
New Cross Hospital (switchbrd) .....	01902 307999
NHS non-emergency number .....	111
Raynor Road Medical Ctre .....	0844 3879400
The Surgery, Woden Road.....	0845 0724628
Tudor Medical Ctre .....	01902 384999

## Help Lines/Others

Citizens Advice Bureau .....	03444 111 444
Childline.....	0800 1111

National Careers Service .....	0800 100900
National Domestic Violence .....	0808 2000 247
RSPCA .....	0300 1234 999
RSPB.....	0845 1200501
Samaritans .....	116 123

## Places of Worship

Church of Latter Day Saints .....	01902 724097
Corpus Christi RC Church.....	01902 731189
Dormition of Her Lady.....	01902 500216
Fallings Park Methodist .....	01902 733574
Gurdwara Sikh Temple .....	01902 730774
Holy Trinity Church Street .....	01902 722840
Old Fallings Utd Reformed .....	01902 861961
Our Ladys Presbytery .....	01902 731189
St Alban's C of E .....	01902 732317
St Patrick's RC Church .....	01902 736440
St Thomas's C of E .....	01902 723310
Wednesfield Christian Ctre .....	01902 689957
W'field Methodist Comm Church .....	01902 727130

## Schools

Ashmore Park Nursery .....	01902 558116
Coppice Performing Arts.....	01902 558500
Corpus Christi Primary .....	01902 866840
D'Eyncourt Primary .....	01902 558778
Edward the Elder Primary .....	01902 558765
Heath Park High School .....	01902 556360
Long Knowle .....	01902 558985
Oak Meadow Primary .....	01902 558517
Our Lady St Chad's.....	01902 558250
Perry Hall Primary .....	01902 558538
St Alban's Primary.....	01902 558825
St. Thomas' C of E Primary.....	01902 558963
St Patrick's Primary.....	01902 556451
Wednesfield High School .....	01902 558222
Wodensfield Primary .....	01902 556350
Wolverhampton City College.....	01902 836000
Wolverhampton University .....	01902 321000
Wood End Primary.....	01902 558940

## Libraries

Ashmore Park .....	01902 556296
Long Knowle .....	01902 556290
Low Hill .....	01902 556293
Wednesfield .....	0121 569 4945



# RL TREE CARE AND LANDSCAPES



**ALL ASPECTS OF TREE WORK FROM; TOPPING, LOPPING, FELLING, PRUNING, REMOVALS, STUMP GRINDING, HEDGE TRIMMING.**

**ALL STYLES OF FENCING SUPPLIED AND ERECTED**

Fully insured up to £2 million



10% off when you mention this advert



**DRIVEWAYS & PATIOS SLABBING GARDEN WALLS TURFING BLOCK PAVING TARMACING/BACK TO BLACK SEALER CONCRETE INPRINT RECOLOURING & SEALING AND MUCH MORE**

Please visit our website and look at our reviews on [checkatrade.com](https://www.checkatrade.com)



**0800 696 5015 or 01922 896 983**

email: [rl.tree.landscaping@live.co.uk](mailto:rl.tree.landscaping@live.co.uk) [www.rltreecareandlandscaping.co.uk](http://www.rltreecareandlandscaping.co.uk)

## Crossword Answers

From page 10



The next issue of  
**Wednesfield**  
Magazine

is out on  
**25th September**

Booking deadline  
**1st September**

If you want to get your  
message out to approx.

30,000 local people, email:

[simon@westmidlandsmagazines.com](mailto:simon@westmidlandsmagazines.com)

or call Simon on: **07534 603662.**



# Ashmore Glass & Mirrors Ltd

**See our new outlet in the  
Hollybush Garden Centre**



**Manufacturers and installers  
of Sheerline Aluminium windows,  
doors, Bi Folding doors & Lanterns.**

- **A-Rated  
French doors**
- **Aluminium Bi folding doors**
- **Composite doors**
- **Stable doors**
- **All window styles**
- **Welded/Mechanical**
- **Flush fit frames**
- **All window repairs**
- **Fascias, soffits and guttering**

**Family run business  
for over 27 years**



**Visit our showroom to see for yourself**

Please call :- Wolverhampton - **01902 488334**

Walsall or Willenhall - **01922 400029**

Freephone - **0800 980 9620**

Units 17, 18, 19, 29, 30 Essington industrial Estate, Bognop Road, Essington WV11 2BA

